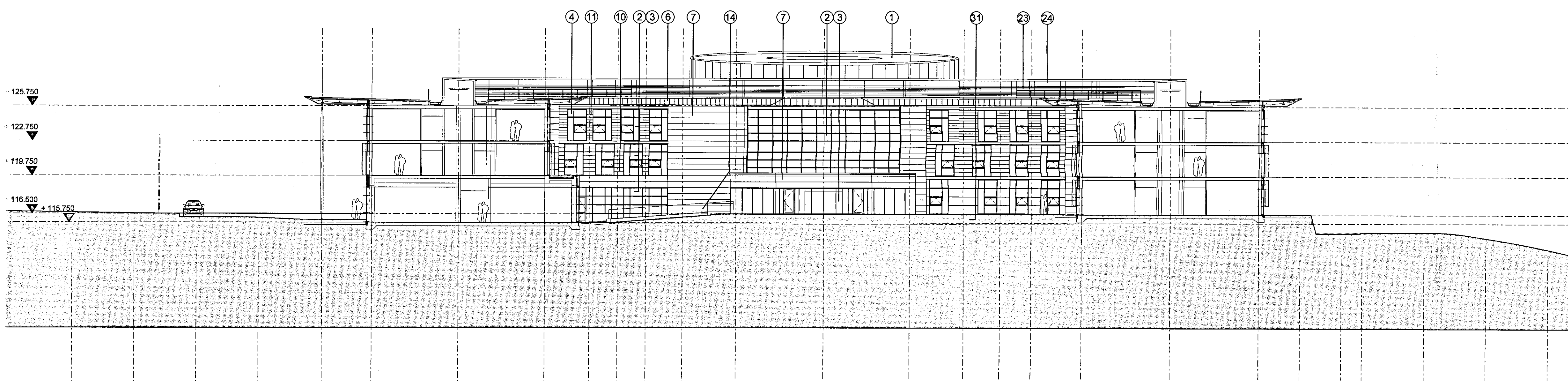
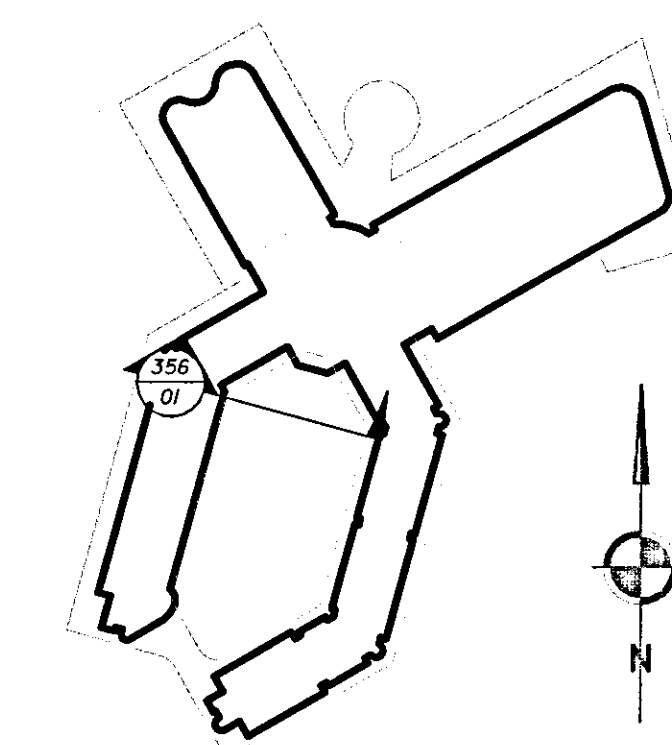


RECEIVED
02 MAR 2010

NOTES
1. To be read with CDM Risk Register
2. Do not scale, check this is the latest version, if in doubt, ask see drawing issue log for issue history

09003-356/01
Hotel Elevation Location Plan
Scale: A7S



09003-356/01
HOTEL BUILDING: ELEVATION A-A
SCALE 1:200

MATERIALS LEGEND

- ① Pre-patinated copper cladding
- ② PPC curtain walling
- ③ Sealed double glazed units
- ④ Sealed double glazed insulated spandrel panels
- ⑤ Bronze anodised aluminium louvre blades
- ⑥ Pre-weathered brass cassette panels to soffits and fascias
- ⑦ Pre-weathered brass strip cladding
- ⑧ Pre-weathered brass plank cladding
- ⑨ Structural glazing (double glazed)
- ⑩ Stone cladding
- ⑪ Oak strip boarding cladding
- ⑫ Oak solar shading fins
- ⑬ ppc channel
- ⑭ Laminated glass balustrade
- ⑮ Custom column with engineered steel head and base connection details
- ⑯ Stainless steel bracing to porte cochere
- ⑰ Bronze screen to plant louvres
- ⑱ Roller shutter doors
- ⑲ ppc steel doorset
- ⑳ Standing seam metal deck roofing
- ㉑ Handrail: ppc 12 x50 flats
- ㉒ Pre-patinated copper rooflight surround
- ㉓ ppc louvres
- ㉔ ppc rainscreen cassette cladding
- ㉕ Kalfest cladding panels in ppc support framework
- ㉖ Painted steel columns with engineered head and base details
- ㉗ Opaque double glazed units
- ㉘ Timber louvres
- ㉙ Tensile opaque fabric roof covering
- ㉚ Gabion walling
- ㉛ Dressed stone walling

P/10/00255

Rev	Issues	Date	By	Review
-	ISSUED FOR PLANNING	2010/02/12	MC	SG

redboxarchitecture

Red Box Architecture, St Nicholas Church, Newcastle upon Tyne, NE1 1RU
t: +44 (0)191 243 7100, f: +44 (0)191 243 7111, mail@redboxdesign.com, www.redboxdesign.com
Red Box Design Group Ltd trading as Red Box Architecture
redboxdesign@group - redboxinteriors - redboxgallery

THE NATIONAL FOOTBALL CENTRE ST GEORGE'S PARK			
HOTEL BUILDING South Elevations			
1:200	09 003	356	-
A1	PLANNING		

copyright © Red Box Design Group Ltd 2010

RECEIVED
02 MAR 2010
TIME: